

Cissell Mfg. Co.
 831 S. First St. / P.O. Box 32270
 Louisville, Ky. 40232-2270
 PH. 502/587-1292
 FAX 502/585-3625
www.cissellmfg.com



Cissell Mfg. Co.
 831 S. First St. / P.O. Box 32270
 Louisville, Ky. 40232-2270
 PH. 502/587-1292
 FAX 502/585-3625
www.cissellmfg.com

The CHD 50 *On Premise Laundry Dryers*



FEATURE

CFM - 750 - 120,000 BTU
 Steam - 5.1 BHP
 Electric - 30 kW

Diagnostics - Standard with DMP control

Safest Dryer Available
 Rotational Sensor - Standard with
 DMP control

Door Switch

Lint Door Switch

24V Controls with Ignition System

Belt Driven

Lint Screen

Textured metal panels

BENEFITS

Ideal balance between BTU and CFM for
 maximum efficiency and fast dry times

Allows operator or service technician
 to instantly diagnose problems

Detects broken belts

Door switch that stops the dryer when the
 door opens

Automatically shuts dryer down when lint
 door is open

Additional safety for operator

Standard

Nylon self-cleaning lint screen with clips
 that make it easily removable

Decorative and durable

Simple Microprocessor with diagnostics (DMP)



Feature

- 1) 5 preset programs
- 2) Anti-wrinkle safety tumble
- 3) Temperature display
- 4) End of cycle buzzer (Standard)
- 5) Extra contacts standard
- 6) Basket RPM display

Benefit

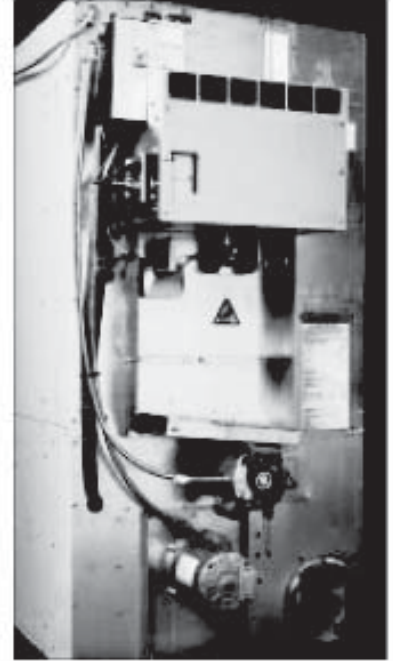
- Dryer can be installed and will work without programming.
- If door is not open at end of cycle dryer will tumble to remove any excess heat and at the same time prevent unnecessary wrinkling.
- Simply push temperature button and hold and it will display the current basket temperature.
- Alerts operator that the cycle is finished.
- Allows a strobe light to be added for the hearing impaired. Meets Veteran Hospital specifications.
- Simply push and hold the start button and it displays RPM's of basket.

DMP, Dual-Timer, and Mechanical Coin
 are available.

CISSELL CHD 50 DRYERS

AGA, CGA, UL, CSA, and CE Approved
 All specifications are subject to change without notice.

Specifications	U.S. Measure	Metric Measure
Capacity (Dry Linen)	50 lb	22 kg
Basket	Diameter	37 in
	Depth	30 in
	Volume	18.67 cu/ft
Cabinet	Height	76.62 in *
	Width	38.62 in
	Depth	47 in
Door Opening	Dia.	22.68 in
		576 mm
Temperature Range.	Min.	100° F
	Max.	185° F
Motor	Rev.	Drum
		1/3 Hp
		0.25 kW
	Fan	1/3 Hp
		0.25 kW
	Non-Rev.	1/2 Hp
		0.37 kW
Exhaust	Flow Rate	750 cfm
	Diameter	8"
		203 mm
Electric Connections - Elec. Dryers		Non-Reversing
30kW	Non-Reversing	Reversing
200-208/60/3	89 Amp	88 Amp
240/60/3	79 Amp	78 Amp
480/60/3	38 Amps	38 Amps
200/50/3	84 Amp	85 Amp
230/50/3	73 Amp	75 Amp
240/50/3	79 Amp	78 Amp
380/50/3	47 Amp	48 Amp
400-415/50/3	43 Amp	44 Amp
21 kW		
240/50/1	93 Amp	95 Amp
Elec. Conn. - Gas & Steam Dryers		
	Non-Reversing	Reversing
120/60/1	9.3 Amp	---
200-208/240/60/1	5.1 Amp	---
200-208/240/60/3	2.8 Amp	4 Amp
460-480/60/3	1.4 Amp	1.9 Amp
200/50/3	3.3 Amp	4.2 Amp
230-240/50/1	6.3 Amp	6.9 Amp
380/400-415/50/3	1.6 Amp	2 Amp
Power	Gas Input	120,000 Btu/h
		30,240 kcal/h
	Electric	30 kW
		26,670 kcal/h
		21 kW
		18,067 kcal/h
	Steam	5.1 bhp
		43,027 kcal/h
	Steam Max. Pressure	100 psi
		6.89 bar
Connection	Gas	1/2"
		DN15
	Steam Inlet	3/4"
		DN20
	Steam Outlet	3/4"
		DN20



Specifications	U.S. Measure	Metric Measure
Shipping Dim. (H x W x D)	81 X 41.5 X 52.1 in	2057 X 1054 X 1323 mm
Wt. (GAS&Elec)	Net	545 lb
	Shipping	602 lb
		247 kg
		273 kg

Authorized Distributor



Cissell Manufacturing Company
 HEADQUARTERS
 831 S. FIRST ST. - P.O. BOX 32270
 LOUISVILLE, KY. 40232-2270
 PH: 502/587-1292 * FAX: 502/585-3625
www.cissellmfg.com



Cissell Mfg. Co.
 831 S. First St. / P.O. Box 32270
 Louisville, Ky. 40232-2270
 PH. 502/587-1292
 FAX 502/585-3625
 www.cissellmfg.com

CHD 50 On Premise Laundry Dryers

Classified Material

This drawing or diskette is submitted to you with the confidence that it will be used only for your information and application engineering studies and shall not be used in any manner detrimental to the interests of Cissell Manufacturing Co.

Clearance: Top: 12" Recommended. 0" permitted for first 4" along front of machine. Back: 24" permitted. 36" recommended - Side: 0" permitted for non-combustible materials.

ALL DIMENSIONS ARE +/- 1/4" (+/- 6.4 mm) AND ARE SUBJECT TO CHANGE WITHOUT NOTICE

